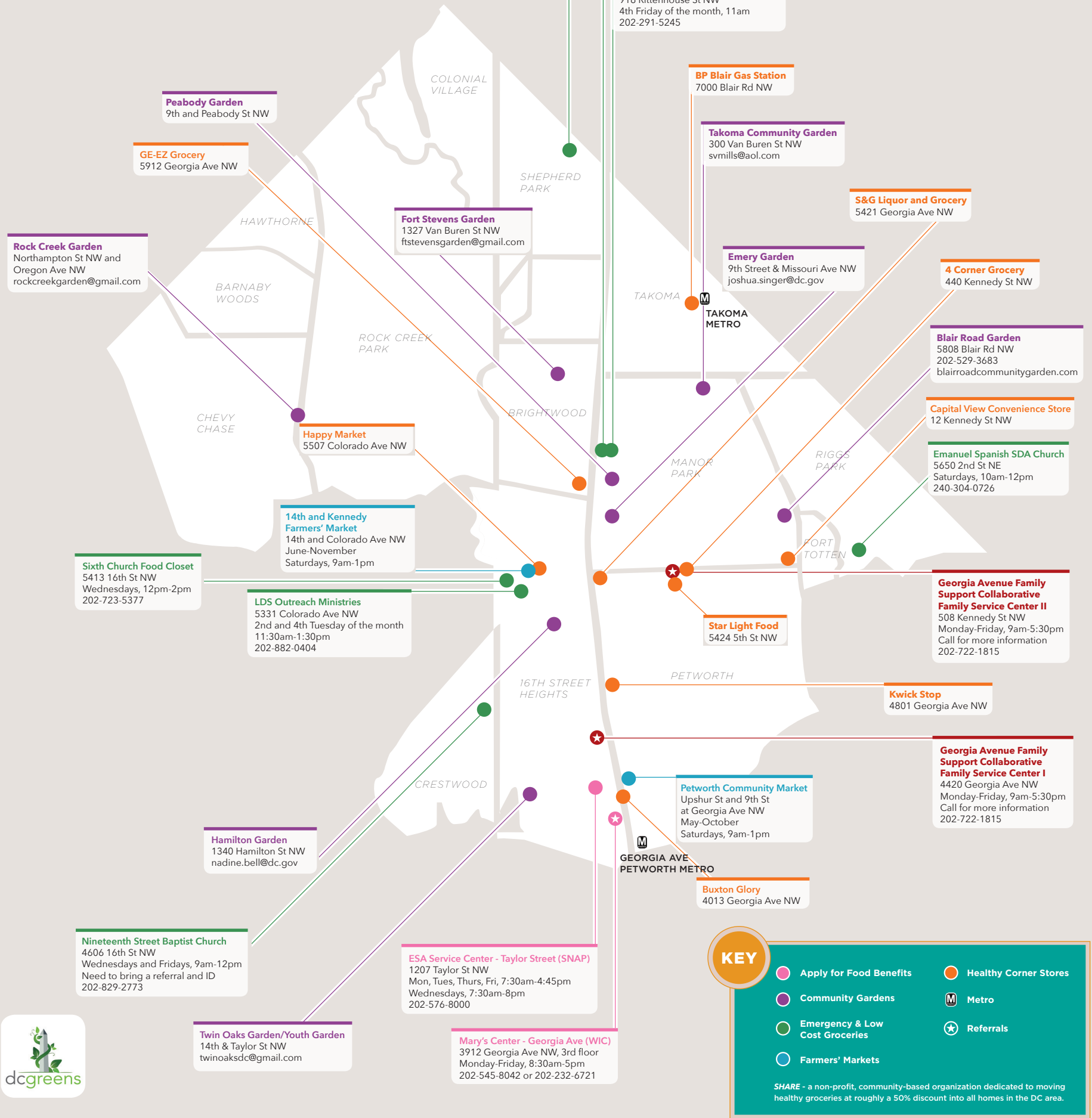


WARD 4

FOOD RESOURCES MAP



Saint Mary's Baptist Church
 8008 Eastern Ave NW
 Wednesdays, 9am-11:30am
 Need to bring bags
 202-726-2424

Emory Beacon of Light, Inc.
 6128 Georgia Ave NW
 Tuesdays, 12pm-2pm
 202-829-5732

Brotherhood of the Cross and Star
 916 Rittenhouse St NW
 4th Friday of the month, 11am
 202-291-5245

BP Blair Gas Station
 7000 Blair Rd NW

Takoma Community Garden
 300 Van Buren St NW
 svmlills@aol.com

S&G Liquor and Grocery
 5421 Georgia Ave NW

4 Corner Grocery
 440 Kennedy St NW

Blair Road Garden
 5808 Blair Rd NW
 202-529-3683
 blairroadcommunitygarden.com

Capital View Convenience Store
 12 Kennedy St NW

Emanuel Spanish SDA Church
 5650 2nd St NE
 Saturdays, 10am-12pm
 240-304-0726

Georgia Avenue Family Support Collaborative Family Service Center II
 508 Kennedy St NW
 Monday-Friday, 9am-5:30pm
 Call for more information
 202-722-1815

Georgia Avenue Family Support Collaborative Family Service Center I
 4420 Georgia Ave NW
 Monday-Friday, 9am-5:30pm
 Call for more information
 202-722-1815

KEY

- Apply for Food Benefits
- Community Gardens
- Emergency & Low Cost Groceries
- Farmers' Markets
- Healthy Corner Stores
- Metro
- Referrals

SHARE - a non-profit, community-based organization dedicated to moving healthy groceries at roughly a 50% discount into all homes in the DC area.

Peabody Garden
 9th and Peabody St NW

GE-EZ Grocery
 5912 Georgia Ave NW

Rock Creek Garden
 Northampton St NW and Oregon Ave NW
 rockcreekgarden@gmail.com

Fort Stevens Garden
 1327 Van Buren St NW
 fstevensgarden@gmail.com

Emery Garden
 9th Street & Missouri Ave NW
 joshua.singer@dc.gov

Happy Market
 5507 Colorado Ave NW

14th and Kennedy Farmers' Market
 14th and Colorado Ave NW
 June-November
 Saturdays, 9am-1pm

Sixth Church Food Closet
 5413 16th St NW
 Wednesdays, 12pm-2pm
 202-723-5377

LDS Outreach Ministries
 5331 Colorado Ave NW
 2nd and 4th Tuesday of the month
 11:30am-1:30pm
 202-882-0404

Star Light Food
 5424 5th St NW

16th Street Heights

Kwick Stop
 4801 Georgia Ave NW

Hamilton Garden
 1340 Hamilton St NW
 nadine.bell@dc.gov

Petworth Community Market
 Upshur St and 9th St at Georgia Ave NW
 May-October
 Saturdays, 9am-1pm

Nineteenth Street Baptist Church
 4606 16th St NW
 Wednesdays and Fridays, 9am-12pm
 Need to bring a referral and ID
 202-829-2773

ESA Service Center - Taylor Street (SNAP)
 1207 Taylor St NW
 Mon, Tues, Thurs, Fri, 7:30am-4:45pm
 Wednesdays, 7:30am-8pm
 202-576-8000

Mary's Center - Georgia Ave (WIC)
 3912 Georgia Ave NW, 3rd floor
 Monday-Friday, 8:30am-5pm
 202-545-8042 or 202-232-6721

Twin Oaks Garden/Youth Garden
 14th & Taylor St NW
 twinoaksdc@gmail.com

