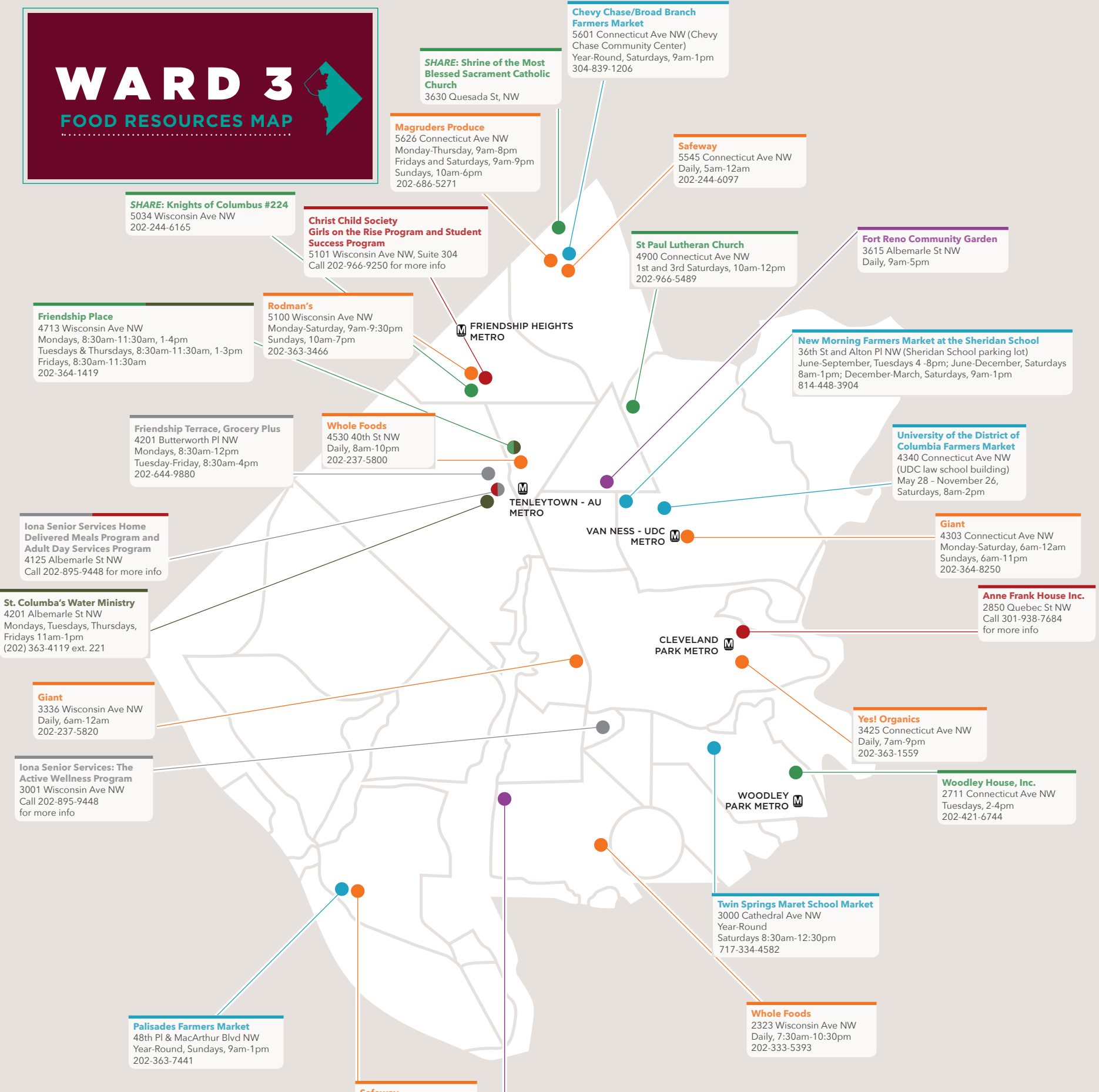


# WARD 3

## FOOD RESOURCES MAP



**SHARE: Shrine of the Most Blessed Sacrament Catholic Church**  
3630 Quesada St, NW

**Chevy Chase/Broad Branch Farmers Market**  
5601 Connecticut Ave NW (Chevy Chase Community Center)  
Year-Round, Saturdays, 9am-1pm  
304-839-1206

**Magruders Produce**  
5626 Connecticut Ave NW  
Monday-Thursday, 9am-8pm  
Fridays and Saturdays, 9am-9pm  
Sundays, 10am-6pm  
202-686-5271

**Safeway**  
5545 Connecticut Ave NW  
Daily, 5am-12am  
202-244-6097

**SHARE: Knights of Columbus #224**  
5034 Wisconsin Ave NW  
202-244-6165

**Christ Child Society Girls on the Rise Program and Student Success Program**  
5101 Wisconsin Ave NW, Suite 304  
Call 202-966-9250 for more info

**St Paul Lutheran Church**  
4900 Connecticut Ave NW  
1st and 3rd Saturdays, 10am-12pm  
202-966-5489

**Fort Reno Community Garden**  
3615 Albemarle St NW  
Daily, 9am-5pm

**Friendship Place**  
4713 Wisconsin Ave NW  
Mondays, 8:30am-11:30am, 1-4pm  
Tuesdays & Thursdays, 8:30am-11:30am, 1-3pm  
Fridays, 8:30am-11:30am  
202-364-1419

**Rodman's**  
5100 Wisconsin Ave NW  
Monday-Saturday, 9am-9:30pm  
Sundays, 10am-7pm  
202-363-3466

**New Morning Farmers Market at the Sheridan School**  
36th St and Alton Pl NW (Sheridan School parking lot)  
June-September, Tuesdays 4-8pm; June-December, Saturdays 8am-1pm; December-March, Saturdays, 9am-1pm  
814-448-3904

**Friendship Terrace, Grocery Plus**  
4201 Butterworth Pl NW  
Mondays, 8:30am-12pm  
Tuesday-Friday, 8:30am-4pm  
202-644-9880

**Whole Foods**  
4530 40th St NW  
Daily, 8am-10pm  
202-237-5800

**University of the District of Columbia Farmers Market**  
4340 Connecticut Ave NW (UDC law school building)  
May 28 - November 26, Saturdays, 8am-2pm

**Iona Senior Services Home Delivered Meals Program and Adult Day Services Program**  
4125 Albemarle St NW  
Call 202-895-9448 for more info

**Giant**  
4303 Connecticut Ave NW  
Monday-Saturday, 6am-12am  
Sundays, 6am-11pm  
202-364-8250

**St. Columba's Water Ministry**  
4201 Albemarle St NW  
Mondays, Tuesdays, Thursdays, Fridays 11am-1pm  
(202) 363-4119 ext. 221

**Anne Frank House Inc.**  
2850 Quebec St NW  
Call 301-938-7684 for more info

**Giant**  
3336 Wisconsin Ave NW  
Daily, 6am-12am  
202-237-5820

**Iona Senior Services: The Active Wellness Program**  
3001 Wisconsin Ave NW  
Call 202-895-9448 for more info

**Yes! Organics**  
3425 Connecticut Ave NW  
Daily, 7am-9pm  
202-363-1559

**Woodley House, Inc.**  
2711 Connecticut Ave NW  
Tuesdays, 2-4pm  
202-421-6744

**Palisades Farmers Market**  
48th Pl & MacArthur Blvd NW  
Year-Round, Sundays, 9am-1pm  
202-363-7441

**Safeway**  
4865 MacArthur Blvd NW  
Daily, 5am-12am  
202-337-5649

**Glover-Archibald Community Garden**  
4122 Edmunds St NW  
Daily, 9am-5pm

**KEY**

- Free Meals
- Community Gardens
- Emergency & Low Cost Groceries
- Farmers' Markets
- Grocery Stores
- Referrals
- Food For Seniors & Homebound
- Metro

SHARE - a non-profit, community-based organization dedicated to moving healthy groceries at roughly a 50% discount into all homes in the DC area.

